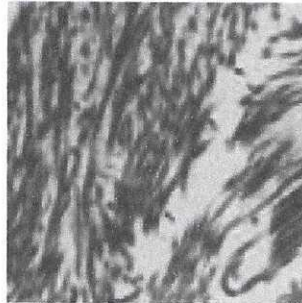
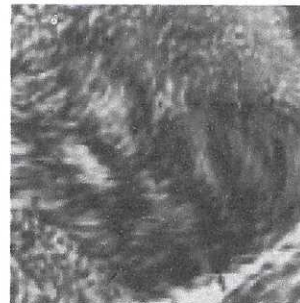


EFFECTS OF ATELOCOLLAGEN MASK IN LABORATORY STUDIES

Atelocollagen Mask contains Atelocollagen that is highly effective in penetrating our skin cells and delivering nutrients beneath our skin.



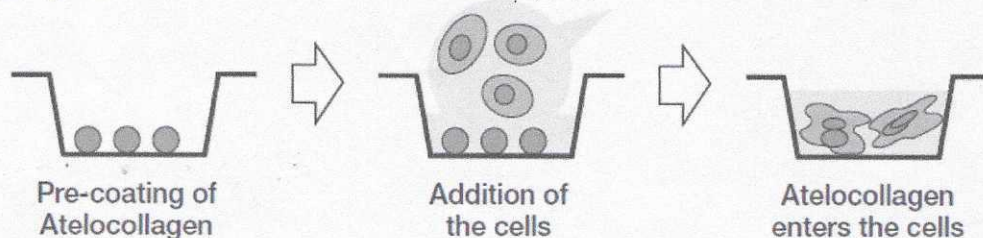
Skin cells without addition
of Atelocollagen



Skin cells with addition
of Atelocollagen

Collagen is stained. Upon addition of Atelocollagen into cell culture, collagen is visibly denser.

Laboratory studies have demonstrated that in addition to the benefits of collagen, Atelocollagen is more easily absorbed into our skin and is non-allergenic.



Scientific References:

Application of atelocollagen-mediated siRNA delivery for RNAi therapies

[Article in Japanese]

Honma K, Takeshita F, Ochiya T.

Section for Studies on Metastasis, National Cancer Center Research Institute, Tokyo, Japan. Yakugaku Zasshi. 2007 May;127(5): 807-12.

Atelocollagen-mediated systemic delivery prevents immunostimulatory adverse effects of siRNA in mammals.

Inaba S, Nagahara S, Makita N, Tarumi Y, Ishimoto T, Matsuo S, Kadomatsu K, Takei Y.

Department of Biochemistry, Nagoya University Graduate School of Medicine, Nagoya, Japan. Molecular therapy. 2012 Feb;20(2):356-66.

Biopolymer gel matrix as acellular scaffold for enhanced dermal tissue regeneration.

Judith R, Nithya M, Rose C, Mandal AB.

Department of Biotechnology, CSIR - Central Leather Research Institute, Adyar, Chennai 600 020, Tamil Nadu, India. Biologics. 2012 Jul;40(4):231-9.